

# **Lots S1 and S2, North West Cambridge, Eddington**

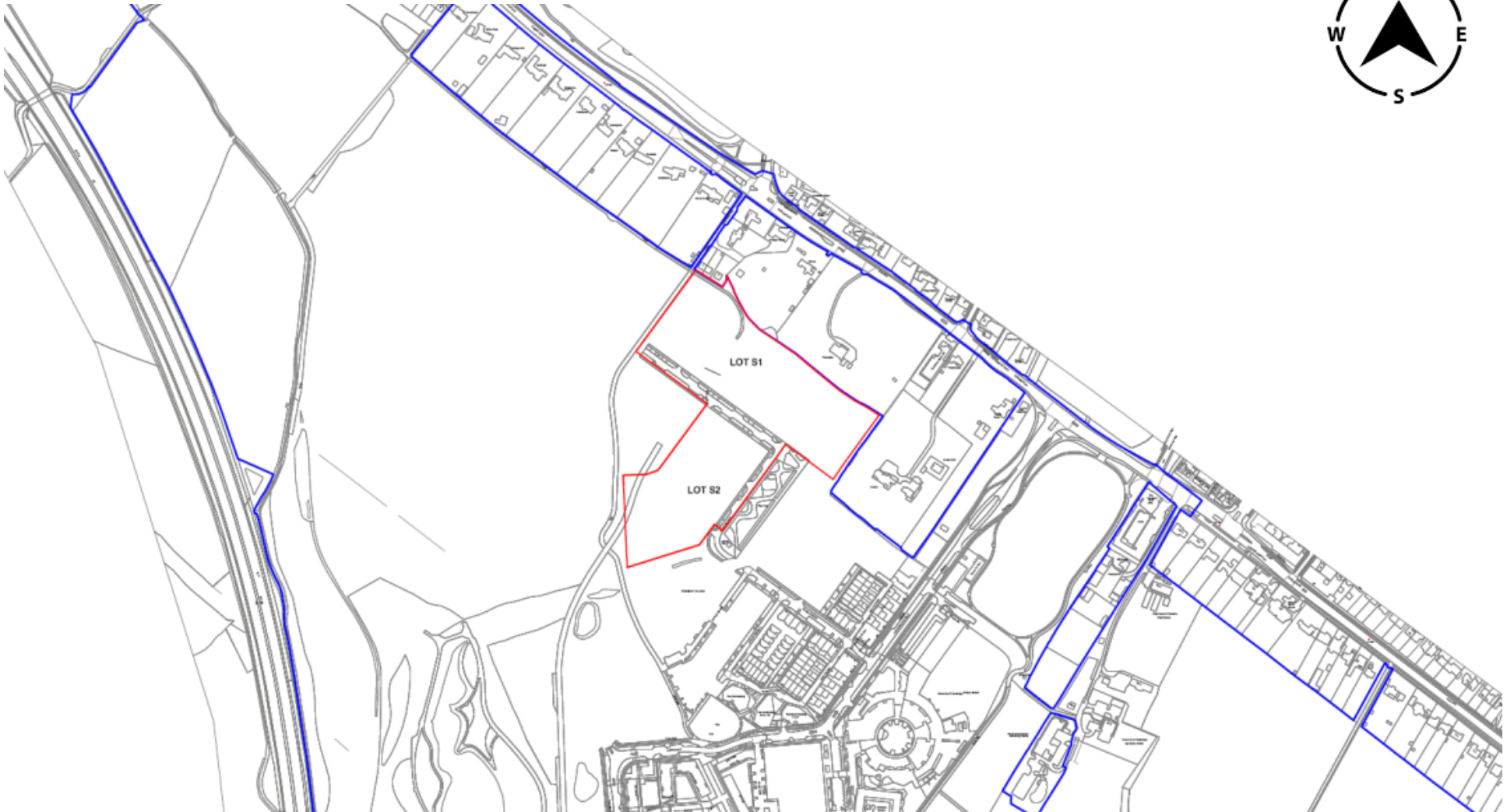
**21/04036/REM**

**Drawing Pack**

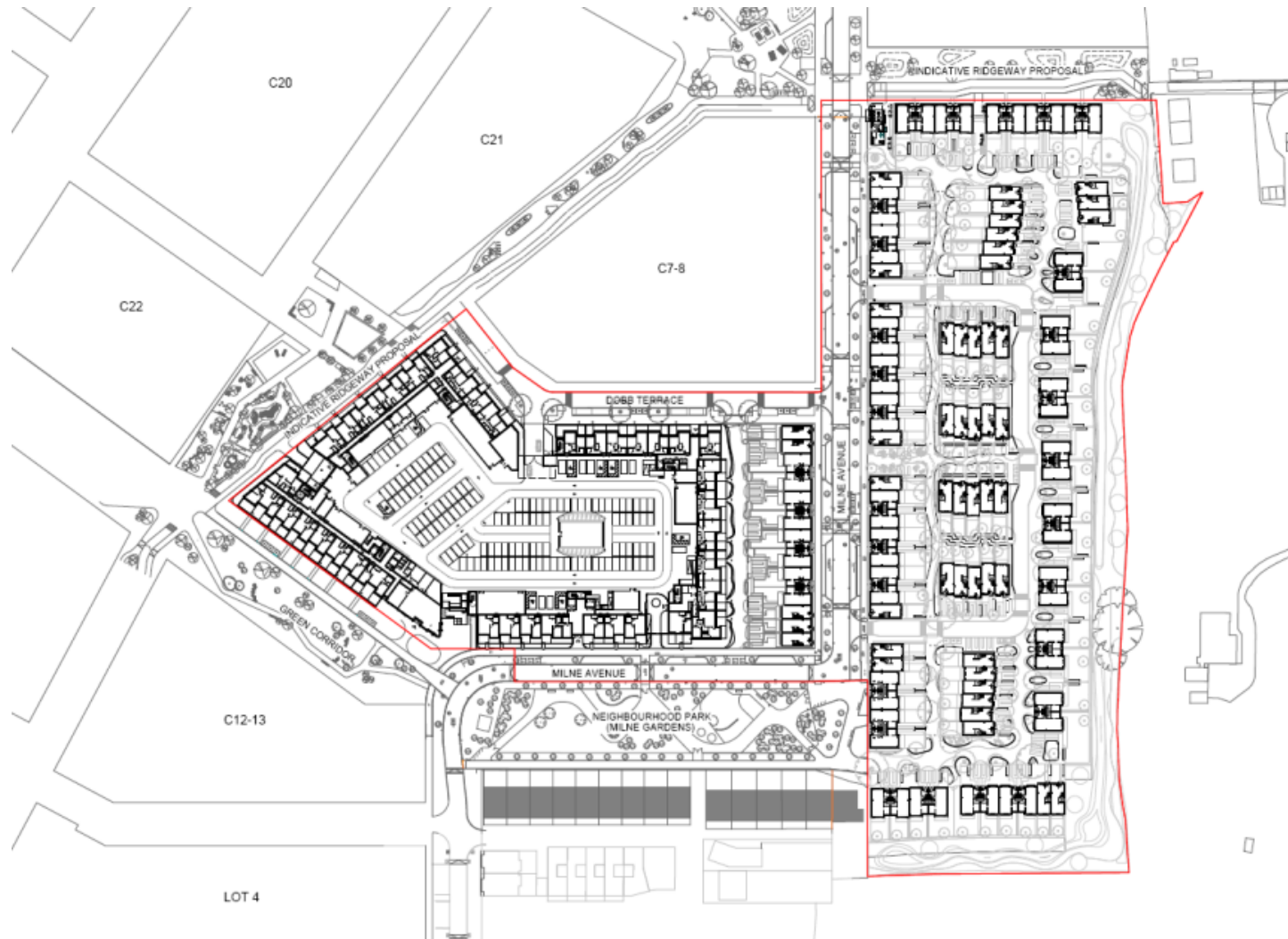
Joint Development Control Committee

17 August 2022

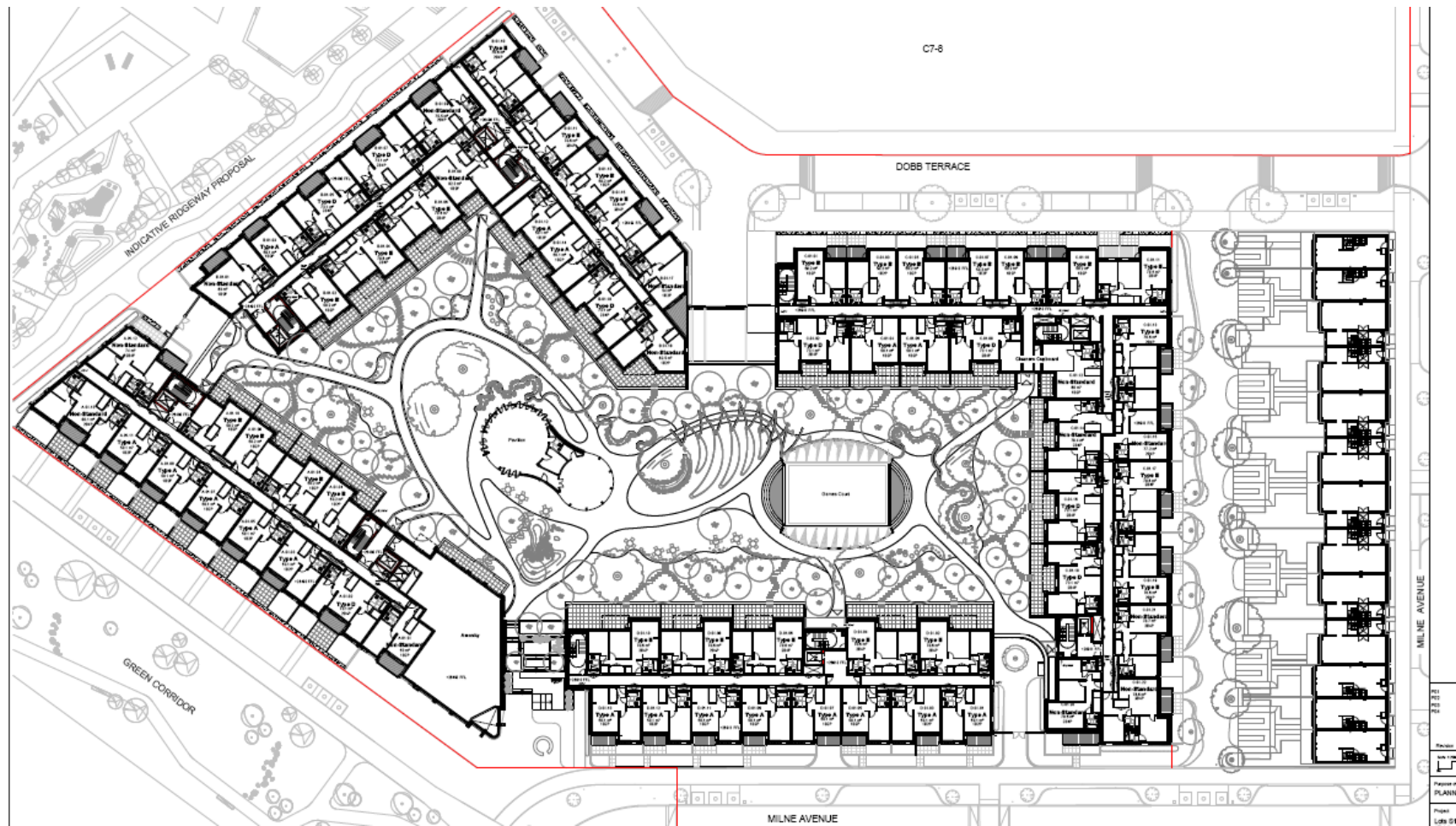
# Location plan



# Proposed site plan (ground floor)



# Proposed S2 Site Plan (first floor)

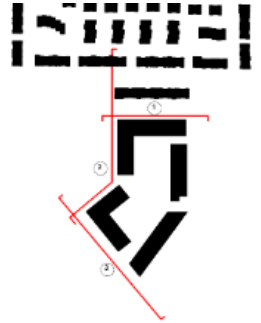
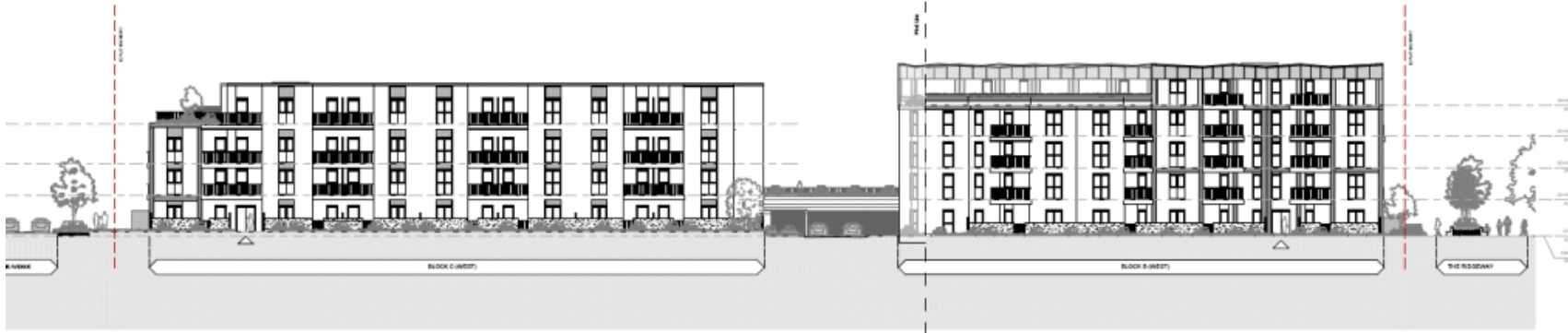




# Proposed S1 Site Plan (ground floor)



# Proposed Apartment Building Elevations



# Proposed Houses Elevations



1A S1 GENERAL ARRANGEMENT ELEVATION - THE AVENUE (PART 1)



1B S1 GENERAL ARRANGEMENT ELEVATION - THE AVENUE

